

# Fayetteville State University's Focus on the Military



Remote Classrooms  
and  
Virtual Seats

*Presented by,  
Darrell Vickers and Amber Kutny*

# The Military: Important Constituents

---

- ❑ The Primary Economic Driver of Eastern North Carolina
  - \$18.5 Billion
  - Over 120,000 service members and their families
- ❑ Growth is projected
  - As a result of BRAC
  - Civilian multiplier effect resulting from privatization
- ❑ Tremendous Opportunity for NC Schools



# **DoD Voluntary Education**

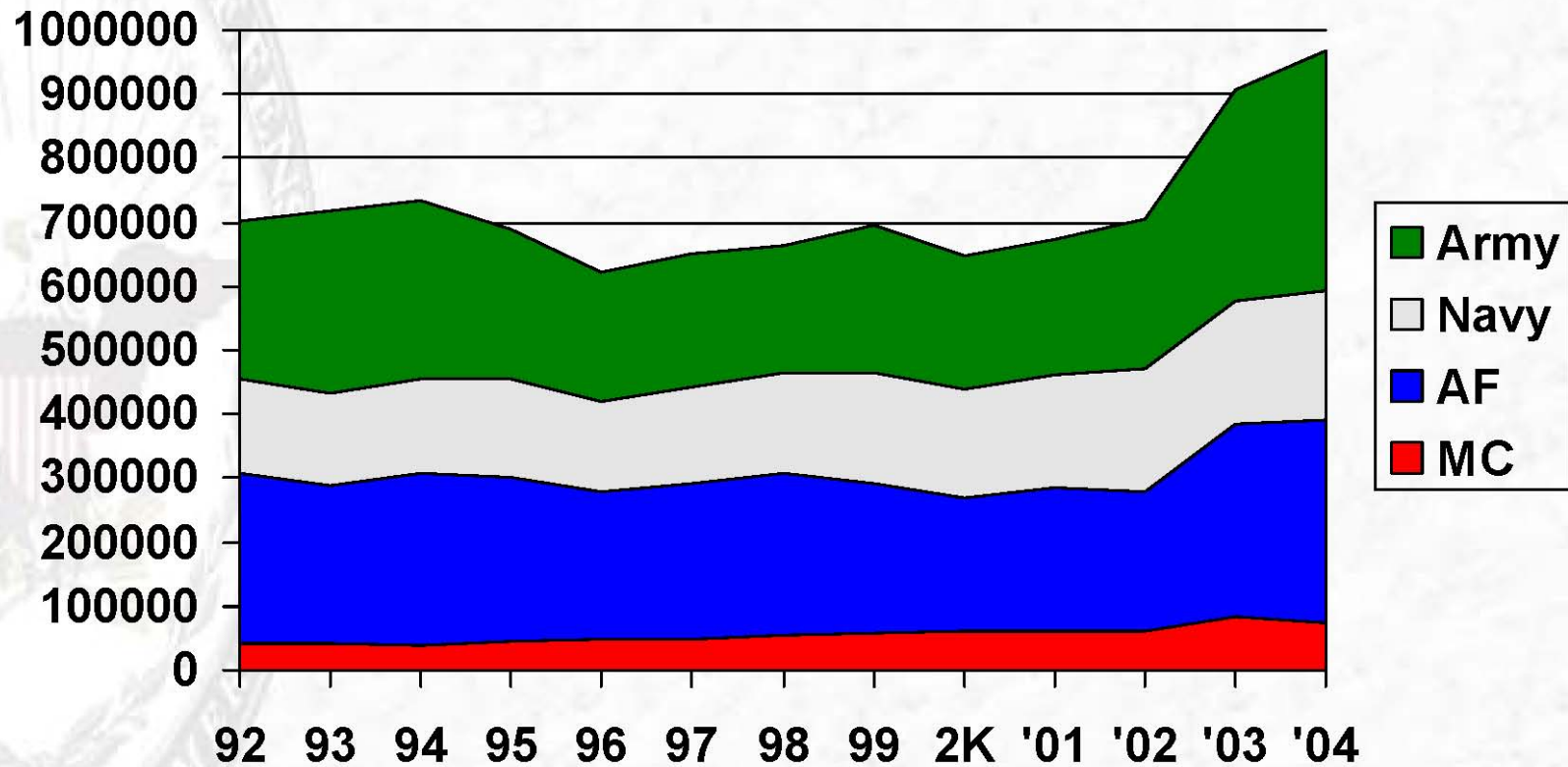
## **a Broad Overview**

**March 2005**

**Carolyn L. Baker**  
**Chief of Continuing Education**  
**Department of Defense**

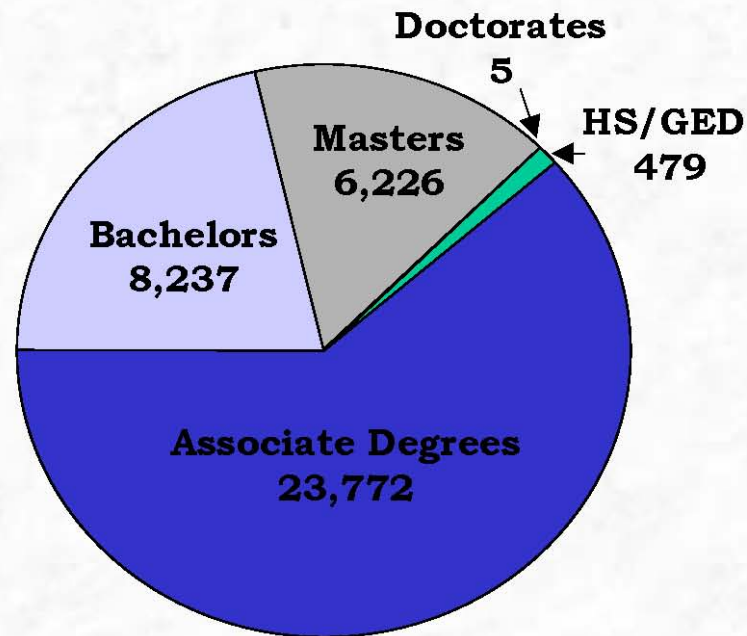
*Personnel and Readiness*

# FY04 Course Enrollments



\*Source: FY2004 Voluntary Education Report

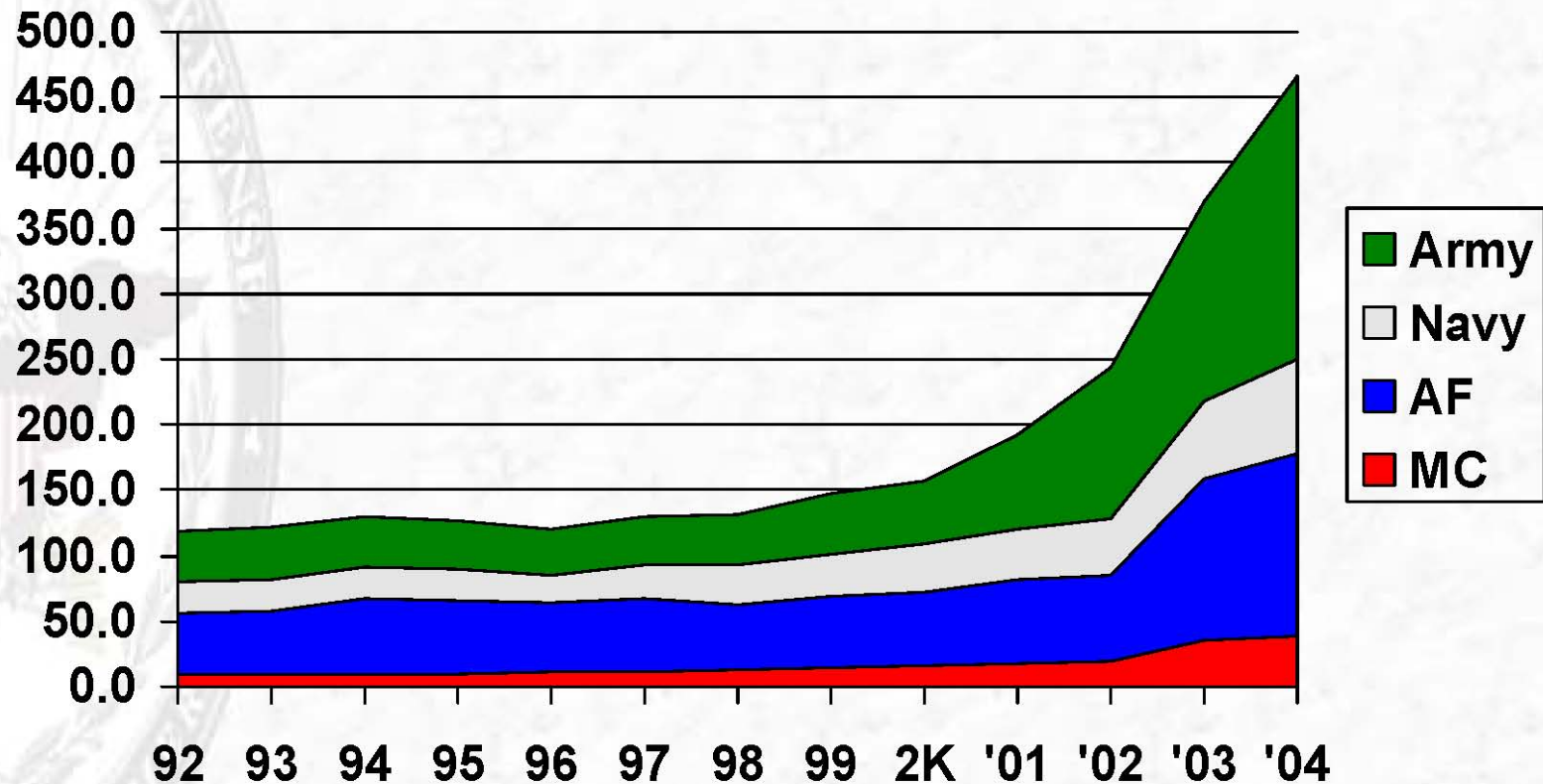
# Active Duty *Diplomas/Degrees Awarded FY04*



**38,719 Degrees/Diplomas  
Earned (FY 04)**

Source: FY2004 Voluntary Education Report

# FY04 Military Tuition Assistance



Source: FY2004 Voluntary Education Report

The seal of the Department of Justice is visible on the left side of the slide. It features an eagle with wings spread, perched on a shield with vertical stripes, surrounded by a laurel wreath. The text "DEPARTMENT OF JUSTICE" and "UNITED STATES OF AMERICA" is visible around the perimeter of the seal.

## **Tuition Assistance Expenditures**


- FY00 actual ... \$157.2M
- FY01 actual ... \$192.4M
- FY02 actual ... \$243.2M
- FY03 actual ... \$377.6M
- FY04 actual ... \$467.0M
- FY05 target ... \$570.0M

# Tuition Assistance Trends

- **Current Tuition Assistance Policy**
  - \$250.00 per semester credit cap
  - Annual ceiling of \$4500.00
  - Up from \$187.50 and \$3500
- **Army-driven 2000 Legislation**
  - 100% coverage permitted
  - High cost drives incremental funding
    - Eventually more fees may be covered
- **Annual re-analysis**

*The following slides are from:*

**Air Force Voluntary Education Update**  
Annual CCME Meeting  
January 2007



ANNE M. SMITH  
Chief, AF Voluntary Education

# Overview of Status

---

- ❑ AFAEMS/AFVEC connects to:
  - 81 Education & Training Flights – on-line TA
  - 40 Reserve Units – on-line TA
  - 54 Guard Units
  - 7 Learning Resource Centers (LRC) in the “Desert”
- ❑ 229 colleges on-base
- ❑ 1357 on & off-base colleges
- ❑ 31,408 total degrees awarded from 792 colleges
- ❑ \$149M expended for Mil TA (FY06)
  - 3% increase
- ❑ 268, 635 Enrollments
  - 3% decrease

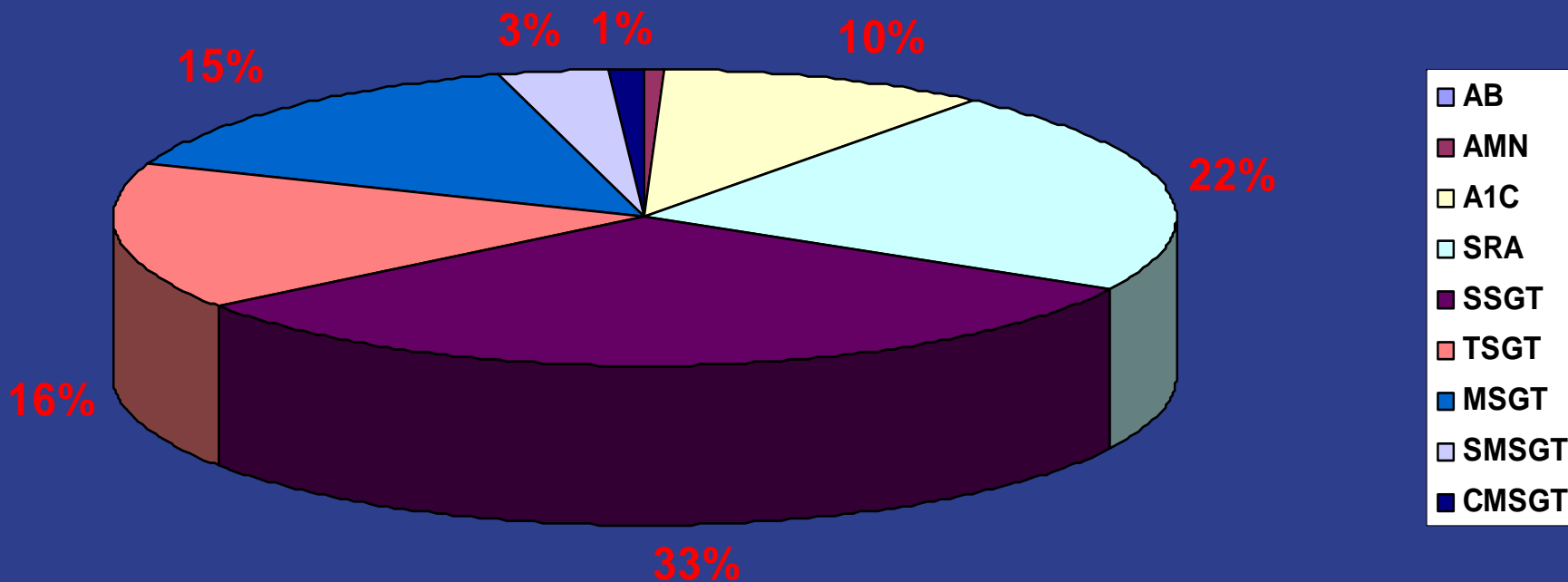
# Military Tuition Assistance Trends 2003-2006

FY	Enrollments	Individuals	GovCost
2004	287,683	90,642	\$139,646,893.27
2003	295,008	85,562	\$123,299,870.00
DELTA	(7,325)	5,080	\$16,347,023.27
%DELTA	-2%	6%	13%

FY	Enrollments	Individuals	GovCost
2005	278,244	91,528	\$145,344,643.11
2004	287,683	90,642	\$139,646,893.27
DELTA	(9,439)	886	\$5,697,749.85
%DELTA	-3%	1%	4%

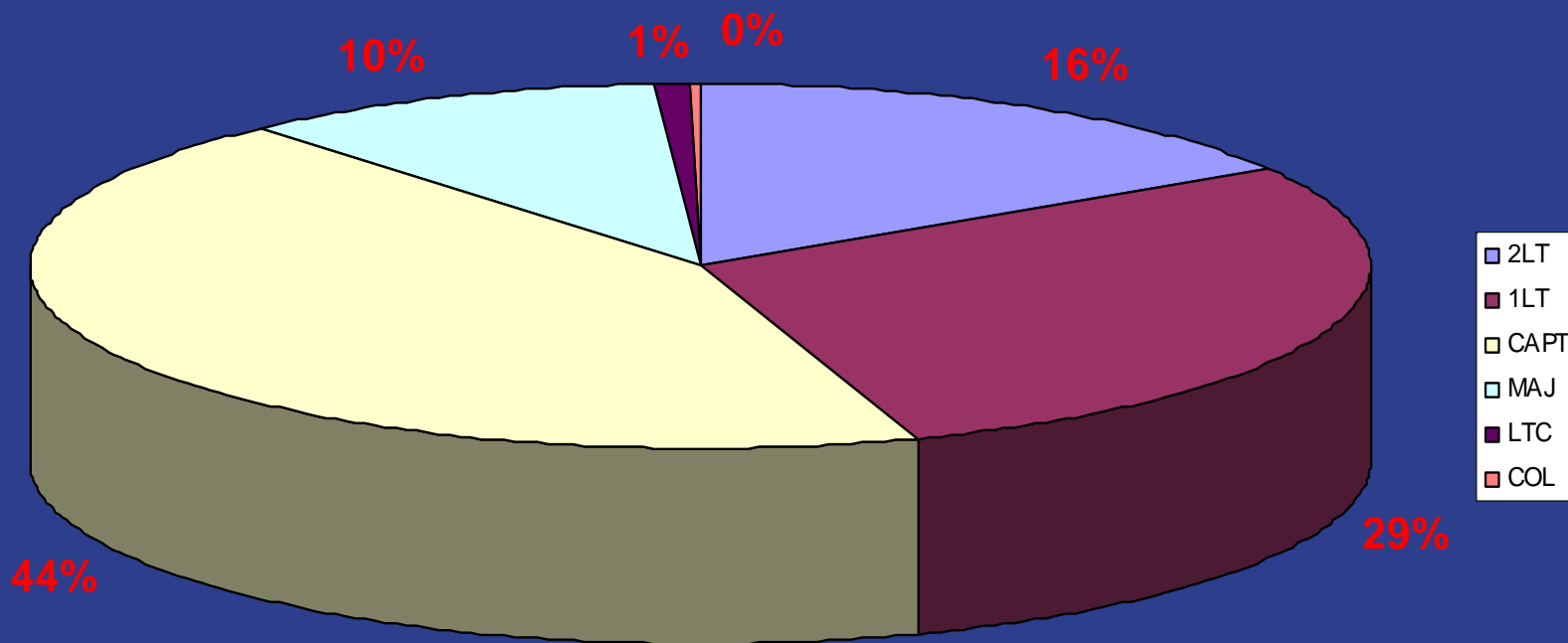
FY	Enrollments	Individuals	GovCost
2006	268,635	89,326	\$149,739,712.68
2005	278,244	91,528	\$145,344,643.11
DELTA	(9,609)	(2,202)	\$4,395,069.57
%DELTA	-3%	-2%	3%

# FY06 Enlisted Enrollments by Rank



SrA	22%
SSgt	33%
TSgt	16%
MSgt	15%

# FY06 Officer Enrollments by Rank



2 <sup>nd</sup> Lt	16%
1 <sup>st</sup> Lt	29%
Capt	44%

# Mil TA Activity Among 1357 Schools

---

	Total AF TA	Total Enroll	Total Indiv	Average Enroll *	Average AF TA per Enroll
All Schools	\$149,219,853			2.62	\$558.24
50 Schools (840+ TA enroll)	\$118,922,946	213,560	79,417	2.69	\$556.86
108 Schools	\$19,183,197	35,193	15,628	2.25	\$545.09
1199 Schools (< 50 TA indiv)	\$11,113,710	18,550	6,895	2.69	\$599.12

\*Past Average AF Enrollments 2.9 – 3.1

# AF Mil TA - Proportion of Activity

---

	% of AF TA	% of Enr	% of Ind
50 Schools (840+ TA Enroll)	80%	80%	78%
108 Schools	13%	13%	15%
1199 Schools (< 50 TA Individ)	7%	7%	7%

# Trends in DL Compared with Traditional Course Enrollments 2003-2006

---

Fiscal Year	DL Enrollments	Traditional Enrollments
2003	24%	76%
2004	31%	69%
2005	36%	64%
2006	44%	56%

# Trends in Cost of DL Courses

FY	DL Ave Govt Cost	Trad Ave Govt Cost	DL Ave Increase	Trad Ave Increase	Delta DL Vs Trad	% of Delta
*2003	\$456.58	\$370.09			\$86.49	23.37%
2004	\$573.99	\$415.03	25.72%	12.14%	\$158.96	38.30%
2005	\$634.73	\$434.75	10.58%	4.75%	\$199.98	46.00%
2006	\$655.13	\$459.99	12.78%	5.81%	\$195.14	42.42%

\* Fiscal Year Mil TA Increased to 100%

DL – Distance Learning courses (not just DL schools)

Trad – Traditional in-the-classroom courses

# 50 Most Active Suppliers to Air Force

---

## □ Range of Activity

- Mil TA                \$76K - \$17M
- Enrollments        841 – 34,181
- Individuals        247 - 14,512

# 50 Most Active Suppliers to Air Force

SCHOOL NAME	Total_AF TA	Total_Enr	Total_Ind
ALAMO COMMUNITY COLLEGE DISTRICT	\$574,035.34	2583	895
ALLAN HANCOCK COLLEGE	\$75,681.00	841	389
AMERICAN INTERCONTINENTAL UNIVERSITY	\$1,458,851.74	1272	503
AMERICAN MILITARY UNIVERSITY	\$8,795,825.94	11914	4466
BELLEVUE UNIVERSITY	\$2,526,410.33	3396	989
BURLINGTON COUNTY COLLEGE	\$260,138.45	1056	465
CAMPBELL UNIVERSITY	\$550,527.00	1084	321
CENTRAL MICHIGAN UNIVERSITY	\$749,806.00	1007	312
CENTRAL TEXAS COLLEGE	\$1,980,664.41	5198	2683
CHAPMAN UNIVERSITY	\$773,392.30	1094	490
COLORADO TECHNICAL UNIVERSITY	\$1,373,747.77	2045	507
COLUMBIA COLLEGE (MO)	\$668,226.78	1295	451
COLUMBIA SOUTHERN University	\$1,319,011.64	2535	738
COMMUNITY COLLEGE OF SOUTHERN NEVADA	\$210,233.14	1193	657
DEVRY UNIVERSITY	\$1,098,554.85	1378	506
EMBRY RIDDLE AERONAUTICAL UNIVERSITY	\$15,144,830.99	25167	9561
GEORGIA MILITARY COLLEGE	\$647,631.00	1705	729
GRANTHAM UNIVERSITY	\$3,936,619.74	5010	1748
GULF COAST COMMUNITY COLLEGE	\$231,862.96	1205	475
HAWAII PACIFIC UNIVERSITY	\$667,800.50	1537	509
LAKE REGION STATE COLLEGE	\$544,354.43	1218	503
LIBERTY UNIVERSITY	\$752,434.50	1074	411
LOUISIANA TECH UNIVERSITY	\$595,249.80	1807	639
METROPOLITAN COMMUNITY COLLEGE	\$194,851.26	1048	483
MINOT STATE UNIVERSITY	\$530,433.25	890	459

*\* Alphabetical Order*

# 50 Most Active Suppliers to Air Force

SCHOOL NAME	Total_AF TA	Total_Enr	Total_Ind
MOUNT OLIVE COLLEGE	\$615,867.00	1709	589
NATIONAL AMERICAN UNIVERSITY	\$1,242,657.35	2688	730
NATIONAL LOUIS UNIVERSITY	\$767,103.24	1188	248
OKALOOSA WALTON COLLEGE	\$708,284.99	3713	1579
PARK UNIVERSITY	\$10,847,920.39	22443	8260
PIERCE COLLEGE	\$882,958.25	1807	788
PIKES PEAK COMMUNITY COLLEGE	\$378,288.89	1123	533
PIMA COUNTY COMMUNITY COLLEGE DISTRICT	\$401,894.78	2050	902
RIO SALADO COMMUNITY COLLEGE	\$239,341.92	1190	587
ROSE STATE COLLEGE	\$307,161.99	1412	577
SAINT LEO UNIVERSITY	\$3,109,856.94	6359	2016
SOUTHERN ILLINOIS UNIVERSITY AT CARBONDALE	\$1,760,642.54	3327	739
SOUTHWESTERN COLLEGE	\$599,817.97	982	268
STATE FAIR COMMUNITY COLLEGE	\$265,093.50	887	383
STRAYER UNIVERSITY	\$1,370,440.33	1849	598
TOURO UNIVERSITY INTERNATIONAL	\$7,594,285.04	8014	2574
TROY UNIVERSITY	\$3,364,124.68	6105	1906
UNIVERSITY OF ALASKA ANCHORAGE	\$418,913.50	1106	557
UNIVERSITY OF MARYLAND UNIVERSITY COLLEGE	\$17,377,812.70	34181	14512
UNIVERSITY OF OKLAHOMA	\$1,536,564.97	3085	816
UNIVERSITY OF PHOENIX ALL CAMPUS	\$10,230,366.94	13959	5373
WAYLAND BAPTIST UNIVERSITY	\$4,149,332.13	8613	2591
WEBSTER UNIVERSITY	\$3,738,514.14	5040	1736
WESTERN INTERNATIONAL UNIVERSITY	\$979,215.55	1316	419
WILMINGTON COLLEGE	\$375,312.00	862	247

*\* Alphabetical Order*

# Average Cost per Enrollment (50 most active suppliers)

---

- Range of Cost per Enrollment
  - \$90 - \$1147

# Average Cost per Enrollment (50 most active suppliers – alpha order)

SCHOOL NAME	Total_AF TA	Total_Enr	Ave Cost
ALAMO COMMUNITY COLLEGE DISTRICT	\$574,035.34	2583	<b>\$222</b>
ALLAN HANCOCK COLLEGE	\$75,681.00	841	<b>\$90</b>
AMERICAN INTERCONTINENTAL UNIVERSITY	\$1,458,851.74	1272	<b>\$1,147</b>
AMERICAN MILITARY UNIVERSITY	\$8,795,825.94	11914	<b>\$738</b>
BELLEVUE UNIVERSITY	\$2,526,410.33	3396	<b>\$744</b>
BURLINGTON COUNTY COLLEGE	\$260,138.45	1056	<b>\$246</b>
CAMPBELL UNIVERSITY	\$550,527.00	1084	<b>\$508</b>
CENTRAL MICHIGAN UNIVERSITY	\$749,806.00	1007	<b>\$745</b>
CENTRAL TEXAS COLLEGE	\$1,980,664.41	5198	<b>\$381</b>
CHAPMAN UNIVERSITY	\$773,392.30	1094	<b>\$707</b>
COLORADO TECHNICAL UNIVERSITY	\$1,373,747.77	2045	<b>\$672</b>
COLUMBIA COLLEGE (MO)	\$668,226.78	1295	<b>\$516</b>
COLUMBIA SOUTHERN University	\$1,319,011.64	2535	<b>\$520</b>
COMMUNITY COLLEGE OF SOUTHERN NEVADA	\$210,233.14	1193	<b>\$176</b>
DEVRY UNIVERSITY	\$1,098,554.85	1378	<b>\$797</b>
EMBRY RIDDLE AERONAUTICAL UNIVERSITY	\$15,144,830.99	25167	<b>\$602</b>
GEORGIA MILITARY COLLEGE	\$647,631.00	1705	<b>\$380</b>
GRANTHAM UNIVERSITY	\$3,936,619.74	5010	<b>\$786</b>
GULF COAST COMMUNITY COLLEGE	\$231,862.96	1205	<b>\$192</b>
HAWAII PACIFIC UNIVERSITY	\$667,800.50	1537	<b>\$434</b>
LAKE REGION STATE COLLEGE	\$544,354.43	1218	<b>\$447</b>
LIBERTY UNIVERSITY	\$752,434.50	1074	<b>\$701</b>
LOUISIANA TECH UNIVERSITY	\$595,249.80	1807	<b>\$329</b>
METROPOLITAN COMMUNITY COLLEGE	\$194,851.26	1048	<b>\$186</b>
MINOT STATE UNIVERSITY	\$530,433.25	890	<b>\$596</b>

*\* Alphabetical Order*

# Average Cost per Enrollment (50 most active suppliers – alpha order)

SCHOOL NAME	Total_AF TA	Total_Enr	Ave Cost
MOUNT OLIVE COLLEGE	\$615,867.00	1709	<b>\$360</b>
NATIONAL AMERICAN UNIVERSITY	\$1,242,657.35	2688	<b>\$462</b>
NATIONAL LOUIS UNIVERSITY	\$767,103.24	1188	<b>\$646</b>
OKALOOSA WALTON COLLEGE	\$708,284.99	3713	<b>\$191</b>
PARK UNIVERSITY	\$10,847,920.39	22443	<b>\$483</b>
PIERCE COLLEGE	\$882,958.25	1807	<b>\$489</b>
PIKES PEAK COMMUNITY COLLEGE	\$378,288.89	1123	<b>\$337</b>
PIMA COUNTY COMMUNITY COLLEGE DISTRICT	\$401,894.78	2050	<b>\$196</b>
RIO SALADO COMMUNITY COLLEGE	\$239,341.92	1190	<b>\$201</b>
ROSE STATE COLLEGE	\$307,161.99	1412	<b>\$218</b>
SAINT LEO UNIVERSITY	\$3,109,856.94	6359	<b>\$489</b>
SOUTHERN ILLINOIS UNIVERSITY AT CARBONDALE	\$1,760,642.54	3327	<b>\$529</b>
SOUTHWESTERN COLLEGE	\$599,817.97	982	<b>\$611</b>
STATE FAIR COMMUNITY COLLEGE	\$265,093.50	887	<b>\$299</b>
STRAYER UNIVERSITY	\$1,370,440.33	1849	<b>\$741</b>
TOURO UNIVERSITY INTERNATIONAL	\$7,594,285.04	8014	<b>\$948</b>
TROY UNIVERSITY	\$3,364,124.68	6105	<b>\$551</b>
UNIVERSITY OF ALASKA ANCHORAGE	\$418,913.50	1106	<b>\$379</b>
UNIVERSITY OF MARYLAND UNIVERSITY COLLEGE	\$17,377,812.70	34181	<b>\$508</b>
UNIVERSITY OF OKLAHOMA	\$1,536,564.97	3085	<b>\$498</b>
UNIVERSITY OF PHOENIX ALL CAMPUS	\$10,230,366.94	13959	<b>\$733</b>
WAYLAND BAPTIST UNIVERSITY	\$4,149,332.13	8613	<b>\$482</b>
WEBSTER UNIVERSITY	\$3,738,514.14	5040	<b>\$742</b>
WESTERN INTERNATIONAL UNIVERSITY	\$979,215.55	1316	<b>\$744</b>
WILMINGTON COLLEGE	\$375,312.00	862	<b>\$435</b>

*\* Alphabetical Order*

# Average Student Costs (50 most active suppliers)

---

- Range of Average Student Costs (after Mil TA)
  - \$0 - \$388

# Average Student Costs (50 most active suppliers)

SCHOOL NAME	Total_Stu	Total_Enr	Ave Stu Cost
ALAMO COMMUNITY COLLEGE DISTRICT	\$213.48	2583	\$0
ALLAN HANCOCK COLLEGE	\$0.00	841	\$0
AMERICAN INTERCONTINENTAL UNIVERSITY	\$462,040.08	1272	\$363
AMERICAN MILITARY UNIVERSITY	\$39,950.20	11914	\$3
BELLEVUE UNIVERSITY	\$140,962.39	3396	\$42
BURLINGTON COUNTY COLLEGE	\$245.50	1056	\$0
CAMPBELL UNIVERSITY	\$5,133.00	1084	\$5
CENTRAL MICHIGAN UNIVERSITY	\$4,855.50	1007	\$5
CENTRAL TEXAS COLLEGE	\$1,632.75	5198	\$0
CHAPMAN UNIVERSITY	\$35,125.71	1094	\$32
COLORADO TECHNICAL UNIVERSITY	\$409,643.03	2045	\$200
COLUMBIA COLLEGE (MO)	\$2,752.22	1295	\$2
COLUMBIA SOUTHERN University	\$3,234.12	2535	\$1
COMMUNITY COLLEGE OF SOUTHERN NEVADA	\$24.00	1193	\$0
DEVRY UNIVERSITY	\$29,900.57	1378	\$22
EMBRY RIDDLE AERONAUTICAL UNIVERSITY	\$868,704.41	25167	\$35
GEORGIA MILITARY COLLEGE	\$64.00	1705	\$0
GRANTHAM UNIVERSITY	\$72,532.76	5010	\$14
GULF COAST COMMUNITY COLLEGE	\$107.48	1205	\$0
HAWAII PACIFIC UNIVERSITY	\$15,769.00	1537	\$10
LAKE REGION STATE COLLEGE	\$285.33	1218	\$0
LIBERTY UNIVERSITY	\$17,439.00	1074	\$16
LOUISIANA TECH UNIVERSITY	\$680.40	1807	\$0
METROPOLITAN COMMUNITY COLLEGE	\$0.00	1048	\$0
MINOT STATE UNIVERSITY	\$1,135.86	890	\$1

\* Alphabetical Order

# Average Student Costs (50 most active suppliers)

SCHOOL NAME	Total_Stu	Total_Enr	Ave Stu Cost
MOUNT OLIVE COLLEGE	\$2,823.00	1709	\$2
NATIONAL AMERICAN UNIVERSITY	\$129,783.63	2688	\$48
NATIONAL LOUIS UNIVERSITY	\$175,890.35	1188	\$148
OKALOOSA WALTON COLLEGE	\$215.42	3713	\$0
PARK UNIVERSITY	\$34,503.63	22443	\$2
PIERCE COLLEGE	\$176.00	1807	\$0
PIKES PEAK COMMUNITY COLLEGE	\$40.25	1123	\$0
PIMA COUNTY COMMUNITY COLLEGE DISTRICT	\$960.13	2050	\$0
RIO SALADO COMMUNITY COLLEGE	\$9.00	1190	\$0
ROSE STATE COLLEGE	\$0.00	1412	\$0
SAINT LEO UNIVERSITY	\$32,068.15	6359	\$5
SOUTHERN ILLINOIS UNIVERSITY AT CARBONDALE	\$15,578.98	3327	\$5
SOUTHWESTERN COLLEGE	\$7,460.00	982	\$8
STATE FAIR COMMUNITY COLLEGE	\$0.00	887	\$0
STRAYER UNIVERSITY	\$717,208.66	1849	\$388
TOURO UNIVERSITY INTERNATIONAL	\$681,895.54	8014	\$85
TROY UNIVERSITY	\$110,088.92	6105	\$18
UNIVERSITY OF ALASKA ANCHORAGE	\$1,825.00	1106	\$2
UNIVERSITY OF MARYLAND UNIVERSITY COLLEGE	\$282,620.66	34181	\$8
UNIVERSITY OF OKLAHOMA	\$90,462.08	3085	\$29
UNIVERSITY OF PHOENIX ALL CAMPUS	\$1,145,734.99	13959	\$82
WAYLAND BAPTIST UNIVERSITY	\$10,176.08	8613	\$1
WEBSTER UNIVERSITY	\$338,518.35	5040	\$67
WESTERN INTERNATIONAL UNIVERSITY	\$16,838.64	1316	\$13
WILMINGTON COLLEGE	\$2,599.00	862	\$3

\* Alphabetical Order

## Average # of Enrollments / Year (50 most active suppliers)

---

- Range of Average # of Enrollments per Year
  - 1.82 – 4.79

# Average # of Enrollments / Year (50 most active suppliers)

SCHOOL NAME	Total_Enr	Total_Ind	Ave Enroll
ALAMO COMMUNITY COLLEGE DISTRICT	2583	895	<b>2.89</b>
ALLAN HANCOCK COLLEGE	841	389	<b>2.16</b>
AMERICAN INTERCONTINENTAL UNIVERSITY	1272	503	<b>2.53</b>
AMERICAN MILITARY UNIVERSITY	11914	4466	<b>2.67</b>
BELLEVUE UNIVERSITY	3396	989	<b>3.43</b>
BURLINGTON COUNTY COLLEGE	1056	465	<b>2.27</b>
CAMPBELL UNIVERSITY	1084	321	<b>3.38</b>
CENTRAL MICHIGAN UNIVERSITY	1007	312	<b>3.23</b>
CENTRAL TEXAS COLLEGE	5198	2683	<b>1.94</b>
CHAPMAN UNIVERSITY	1094	490	<b>2.23</b>
COLORADO TECHNICAL UNIVERSITY	2045	507	<b>4.03</b>
COLUMBIA COLLEGE (MO)	1295	451	<b>2.87</b>
COLUMBIA SOUTHERN University	2535	738	<b>3.43</b>
COMMUNITY COLLEGE OF SOUTHERN NEVADA	1193	657	<b>1.82</b>
DEVRY UNIVERSITY	1378	506	<b>2.72</b>
EMBRY RIDDLE AERONAUTICAL UNIVERSITY	25167	9561	<b>2.63</b>
GEORGIA MILITARY COLLEGE	1705	729	<b>2.34</b>
GRANTHAM UNIVERSITY	5010	1748	<b>2.87</b>
GULF COAST COMMUNITY COLLEGE	1205	475	<b>2.54</b>
HAWAII PACIFIC UNIVERSITY	1537	509	<b>3.02</b>
LAKE REGION STATE COLLEGE	1218	503	<b>2.42</b>
LIBERTY UNIVERSITY	1074	411	<b>2.61</b>
LOUISIANA TECH UNIVERSITY	1807	639	<b>2.83</b>
METROPOLITAN COMMUNITY COLLEGE	1048	483	<b>2.17</b>
MINOT STATE UNIVERSITY	890	459	<b>1.94</b>

*\* Alphabetical Order*

# Average # of Enrollments / Year (50 most active suppliers)

SCHOOL NAME	Total_Enr	Total_Ind	Ave Enroll
MOUNT OLIVE COLLEGE	1709	589	<b>2.90</b>
NATIONAL AMERICAN UNIVERSITY	2688	730	<b>3.68</b>
NATIONAL LOUIS UNIVERSITY	1188	248	<b>4.79</b>
OKALOOSA WALTON COLLEGE	3713	1579	<b>2.35</b>
PARK UNIVERSITY	22443	8260	<b>2.72</b>
PIERCE COLLEGE	1807	788	<b>2.29</b>
PIKES PEAK COMMUNITY COLLEGE	1123	533	<b>2.11</b>
PIMA COUNTY COMMUNITY COLLEGE DISTRICT	2050	902	<b>2.27</b>
RIO SALADO COMMUNITY COLLEGE	1190	587	<b>2.03</b>
ROSE STATE COLLEGE	1412	577	<b>2.45</b>
SAINT LEO UNIVERSITY	6359	2016	<b>3.15</b>
SOUTHERN ILLINOIS UNIVERSITY AT CARBONDALE	3327	739	<b>4.50</b>
SOUTHWESTERN COLLEGE	982	268	<b>3.66</b>
STATE FAIR COMMUNITY COLLEGE	887	383	<b>2.32</b>
STRAYER UNIVERSITY	1849	598	<b>3.09</b>
TOURO UNIVERSITY INTERNATIONAL	8014	2574	<b>3.11</b>
TROY UNIVERSITY	6105	1906	<b>3.20</b>
UNIVERSITY OF ALASKA ANCHORAGE	1106	557	<b>1.99</b>
UNIVERSITY OF MARYLAND UNIVERSITY COLLEGE	34181	14512	<b>2.36</b>
UNIVERSITY OF OKLAHOMA	3085	816	<b>3.78</b>
UNIVERSITY OF PHOENIX ALL CAMPUS	13959	5373	<b>2.60</b>
WAYLAND BAPTIST UNIVERSITY	8613	2591	<b>3.32</b>
WEBSTER UNIVERSITY	5040	1736	<b>2.90</b>
WESTERN INTERNATIONAL UNIVERSITY	1316	419	<b>3.14</b>
WILMINGTON COLLEGE	862	247	<b>3.49</b>

*\* Alphabetical Order*

# FSU's History with the Military

---

- ❑ Over 30 years providing higher education to Ft. Bragg and Pope AFB
  - Undergraduate degrees
- ❑ 2 years providing higher education to Seymour Johnson AFB
  - MBA
  - MSW

# Colleges and Universities on Ft. Bragg

---

- ❑ Campbell University
- ❑ Central Texas College
- ❑ East Carolina University
- ❑ Fayetteville Technical C.C.
- ❑ Fayetteville State University
- ❑ Liberty University
- ❑ Methodist College
- ❑ Troy University
- ❑ University Of North Carolina –Pembroke
- ❑ Webster University
- ❑ Central Michigan University

# Degrees offered on Ft. Bragg

## *Associate, Bachelors, Masters*

COLLEGE	FY06 a/o 1 May 06	
	On-Line Soldier Enrollments	Classroom Soldier Enrollments
Campbell University	212	569
Central Texas College	1,240	1,060
<b>East Carolina University</b>	600	N/A
<b>Fayetteville State University</b>	650	512
Liberty University	528	N/A
<b>Fayetteville Technical Community College</b>	869	1,792
Methodist College	50	401
Troy University	925	70
<b>University of North Carolina - Pembroke</b>	65	97
Webster University	8	333
Central Michigan University	78	Unavailable
<b>TOTAL</b>	<b>5,225</b>	<b>4,834</b>

# FSU on SJAFB – Ranked by Enrollment

---

Rank	School	Ind	Enrolled	TA
3	Embry Riddle	178	229	\$139,970
4	Central Michigan	93	100	\$75,000
5	Touro	59	82	\$78,500
16	Fayetteville State	16	15	\$4,011
19	NC State	12	10	\$5,358
20	East Carolina	4	9	\$4,759

# FSU on SJAFB – Ranked by Tuition

Rank	School	Ind	Enrolled	TA
2	Embry Riddle	178	229	\$139,970
3	Touro	59	82	\$78,500
4	Central Michigan	93	100	\$75,000
20	NC State	12	10	\$5,358
21	East Carolina	4	9	\$4,759
23	Fayetteville State	16	15	\$4,011

“Trains for what is anticipated,  
educates for what is not.”

---

- The military sees the world as:
  - Volatile
  - Uncertain
  - Complex
  - Ambiguous
- As a result of the “muscle memory” of training, it must be supplemented by a well rounded education which allows the service member to make decisions in a **VUCA** world.

# “Education is important to the service member”

---

- ❑ Education was originally pitched as a recruitment and retention incentive.
- ❑ Voluntary education is now sought by the service member –
  - To improve current job performance,
  - To help advancement, and
  - To prepare for separation.
- ❑ On installation education is also important for the service member's dependents.

# Military Criteria for Programs & Courses

---

- ❑ Content
- ❑ Context
- ❑ Modality
- ❑ Modularity
- ❑ Scalability
- ❑ Efficacy

# Military Students

---

- ❑ Military Recruitment Strategy
  - Service member advanced educational opportunities is the *number one* recruiting and retaining strategy
- ❑ Need for *unconventional* education solutions



# Military Students

---

- ❑ How so different?
  - Full time jobs
  - Little free time
    - ❑ Must maximize time usage
  - Frequent deployments/TDY
    - ❑ Have to drop courses due to interruption
  - Located on a Military Base
    - ❑ Far from desired university



# Online Courses

---

## The Good

- ❑ Access to programs anywhere
- ❑ Fits unconventional students' time schedules
- ❑ Increased degree and certificate program offerings

## What's Missing

- ❑ Student and Teacher need to be tech savvy
- ❑ Students need to be VERY disciplined
- ❑ No/Low Student-Teacher interaction
- ❑ No/Low Student-Student interaction
- ❑ One-way Street

# FSU's Approach

---

- ❑ Focus on Military Students
  - Courses on Main Campus and Satellite Campuses
    - ❑ SJAFB and Ft. Bragg
  - Over 30 years providing higher education to the U.S. Armed Forces
    - ❑ Ft. Bragg
    - ❑ Pope AFB
    - ❑ Seymour Johnson AFB



# FSU's Approach

---

## ❑ Remote Classrooms

- Broadcast real-time, interactive video (IAV) courses
  - ❑ Origination at one site, broadcast to multiple
- Two-way interaction
  - ❑ Ask questions, share ideas, debate
  - ❑ Allows for peer-to-peer group interaction at remote sites
    - Present projects and receive feedback
  - ❑ Students can help students
    - Second opinion/explanation/collaboration

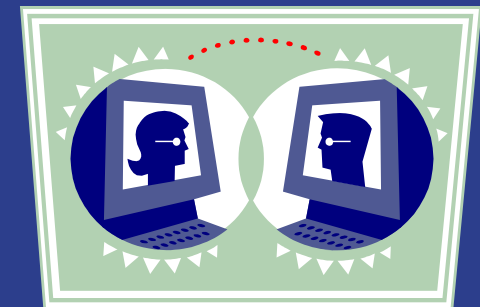


# FSU's Approach

---

## □ Virtual Seats

- Student webcam, microphone, computer, high-speed internet connection, and bridging program
- Location problem disappears
- Maintain consistent schedule
- Two-way interaction
  - Student is still included in conversations
    - Student – Teacher; Student - Student
  - Student can present
    - Email presentation material
    - VNC connection



# Equipment

---

## □ *Main Campus*

- **Video Conferencing Equipment:** Sony PCS-G70 and Data Solutions Box
- *Tested, Multipoint Bridge: Codian MCU*
- *Testing, Capture and Archive: Mediasite, Codian IPVCR*
- **In-class System:** computer; Smart Symposium; document camera; projector & screen; amplifier & speakers; room microphones; wireless microphone; plasma TV; 2 cameras

# Main Campus Equipment

---



Main Campus to SJAFB

# Equipment

---

## □ *Remote Classroom(s)*

- **Video Conferencing Equipment:** Sony PCS-1 and Data Solutions Box
- **In-class System:** computer; interactive whiteboard; projector; big screen TV; Sony camera; speakers; microphone; mobile cart.

# SJAFB Equipment

---



Main Campus to SJAFB

# SJAFB Equipment

---



Main Campus to SJAFB (video)

# Equipment

---

## □ *Virtual Seats*

- Webcam: *high-end*
- Microphone
- Speakers
- ***Optional:*** Headset (headphones and microphone)
- Computer/Laptop
- Bridging program ***TBD***
  - ***Testing Polycom PVX***
- High-speed internet connection

# Virtual Seat Equipment

---



Sample Virtual Seat

# Conclusion

---

- ❑ IAV, remote classrooms, and virtual seats are one solution for the military student
  - Will lead to:
    - ❑ Increased enrollment
    - ❑ Better educated military
- ❑ First University System will make history
- ❑ Expansion will thoroughly meet the needs for higher education of the military