

Bb Shared Hosting

TLT Conference, Raleigh
March 2007



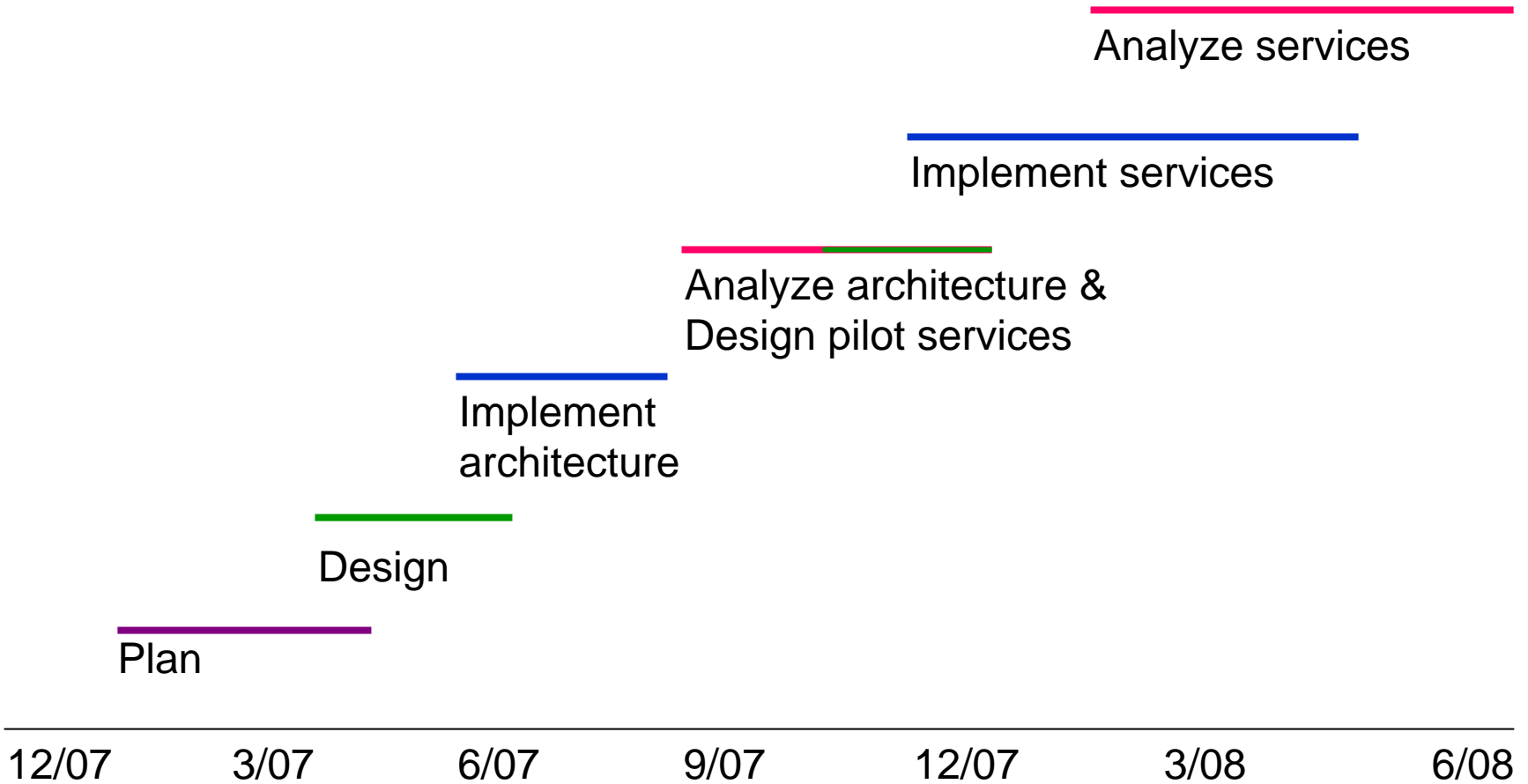
PACE's Charge

Description of Improvement Idea and Impact: The ten Blackboard campuses could consolidate their production hardware and software as much as practical at no more than two redundant data centers so that systems administration, data back up and recovery functions could be provided centrally and remotely from the campuses

Implementation Recommendation: The TLTC could facilitate the implementation of a shared instance of Blackboard for these campuses

Page 193, PACE Report, http://intranet.northcarolina.edu/docs/finance/pace/PACE-Final_Report.pdf

Process & Timeline



Base Objectives

- To consolidate hardware, as much as possible, in a central location or at a hosting NC campus.
- To consolidate Blackboard licenses, as much as possible, for this shared hosting.
- To provide shared staff to administer the application, database, and servers for Blackboard. At a minimum, this staff will maintain operating systems, install and patch the Blackboard application, and provide high-end, tier-three technical support for local Blackboard administrators.

Assumptions

- A high availability, redundant, high-speed and dedicated network.
- Standard hardware, software, and software versions.
- Standard and effective procedures for migration.
- Up-front costs associated with transition.
- Local campus authority and web-based administration.
- Local branding of individual institution's interface.
- A commitment to collaborate on formulating and making governance and business processes work in the short-term and sustainable in the long-term
- Initial backing of academic and IT leadership at each campus and growing input and support of campus constituents.

Campus interest



Next steps

Campuses

- Assign steering committee members.
- Participate in gathering usage and current installation data.

TLTC

- Provide structure for steering committee.
- Initial interview of outside consultants.



Kick-off

Discuss

- Technical models
- Hosting models
- Services included
- Staffing needed
- Governance
- Budget



Project Plan

Other campus involvement

- Hosting organization
- Technical advisor
- Future participant

Contact information

Lori Mathis

mathis@northcarolina.edu

919-387-0844